

## Configuration example with Compaq AP and Compaq WLAN card:

### 1) On the Access Point (AP):

Connect the PC to the AP using a cross over cable

- Install the latest Management SW for the Wireless AP
- Power up the access point, and implement a static IP address or use DHCP for the AP (**snapshot1**)
- Set up a *Network Name*, which should be identical as **SSID** on the Codec:

### snapshot1

Access Control | Link Integrity | Ethernet Interface  
Wireless Interfaces | Access Point IP | SNMP | Bridge

Obtain an IP address from DHCP server  
 Specify an IP Address

Access Point IP: 10.0.2.100  
Access Point Subnet Mask: 255.255.0.0 [Select]  
Default Router IP: 10.0.0.1  
Default ITL: 64

OK Cancel Help

- Select the correct AP displayed on the AP management SW and press Edit (**snapshot 2**)

### snapshot 2

AP Manager  
File Access Point Tools Help

Select AP group: Local Area Network Scan [Edit Group] [Add Group]

Select an Access Point from the list

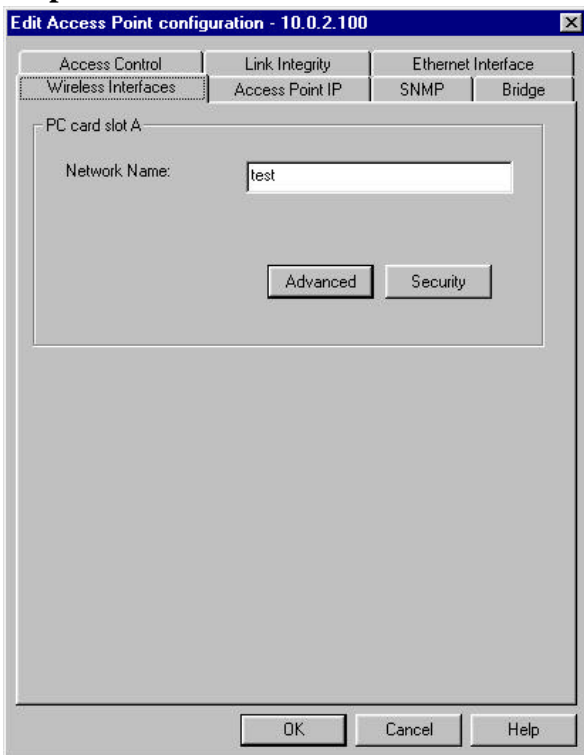
IP Address	AP name	Status
10.0.2.111	Compaq WL410_PG16JL94...	Online
10.0.2.100	test	Online

Connect to: 10.0.2.111 Compaq WL410\_PG16JL94W41D is online.  
[Edit] [Monitor]

OK Help

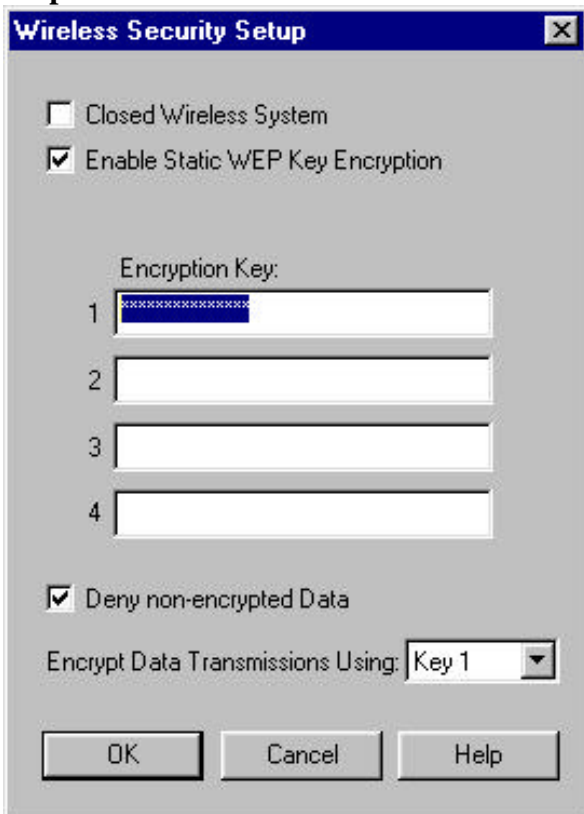
- go to **Wireless Interface** and choose **Security** to setup the encryption between the AP and the WLAN card (**snapshot 3**)

### snapshot 3



- enable encryption and set the encryption key (**snapshot 4**)

### snapshot 4



Important:

64bits key will use 5 ascii characters (ex: trial)

128bits key will use 13 ascii characters (ex: trialencrypti)

## 2) Settings in the Codec:

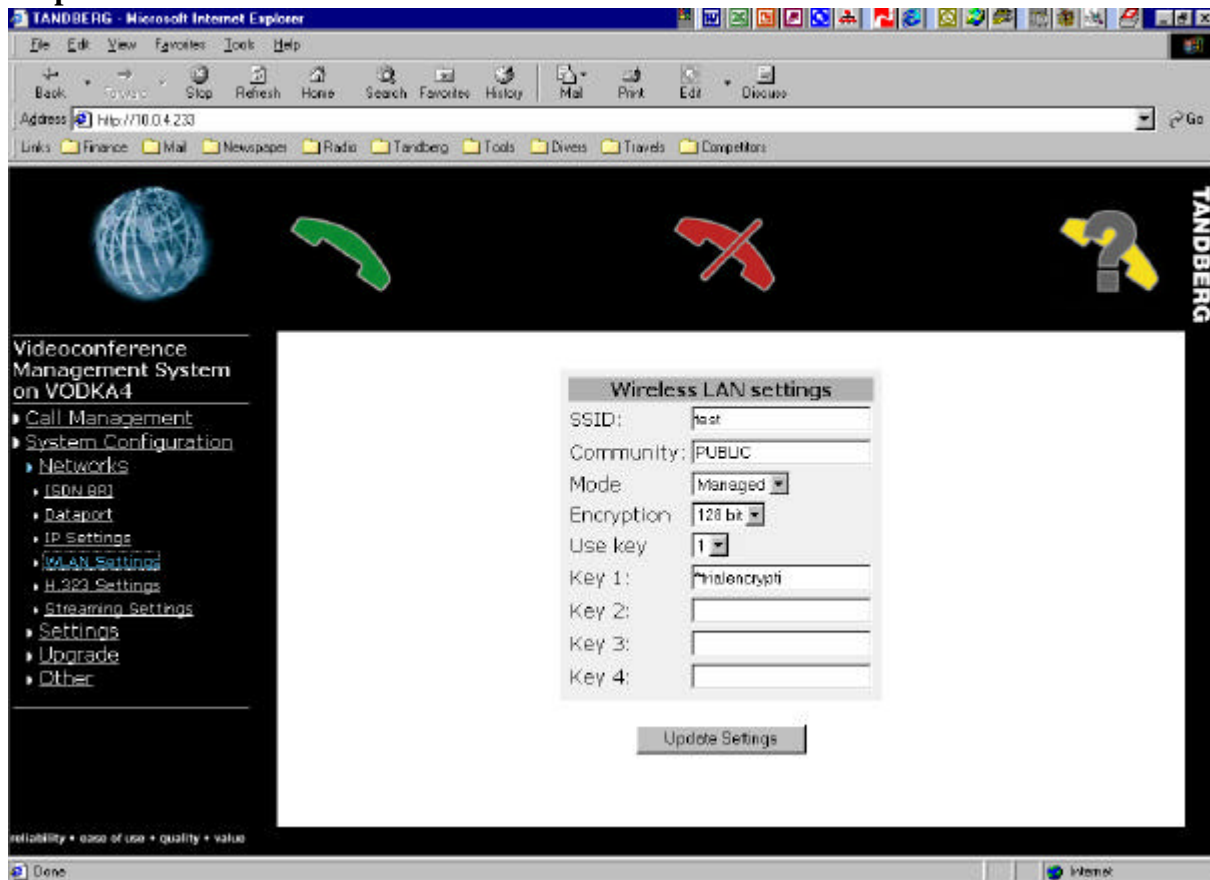
Note that you need to set the correct key (64 or 128bits) in the **WLAN settings** on the codec, which has to start with a leading star (\*) to indicate that the key is not in hex. (**snapshot 5**)

example on the codec:

64bits key : \*trial

128bits key : \*trialencrypti

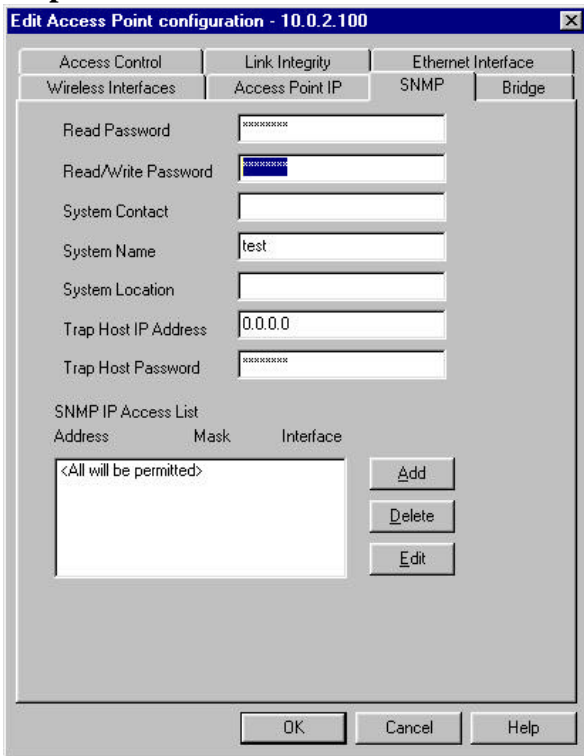
## snapshot 5



### 3) Additional security settings on the AP:

- To secure the AP access, it is recommended to modify the Read/Write password (**snapshot 6**)

#### snapshot 6



- In *Access control*, select *AP Authentication* to restrict the access to this AP from any unexpected terminals, it is recommended to implement the Mac address of the WLAN cards authorised to use the current AP. (**snapshot 7**)

#### snapshot 7

